

HORSE & FARM ANIMAL SUMMER SAFETY TIPS

HORSE BARNES NEED

- Proper Ventilation
- Breezeways
- Gable & Ridge Vents
- Fans



Have shaded areas readily accessible.

Most common sources for shade are trees or Run-In Sheds.

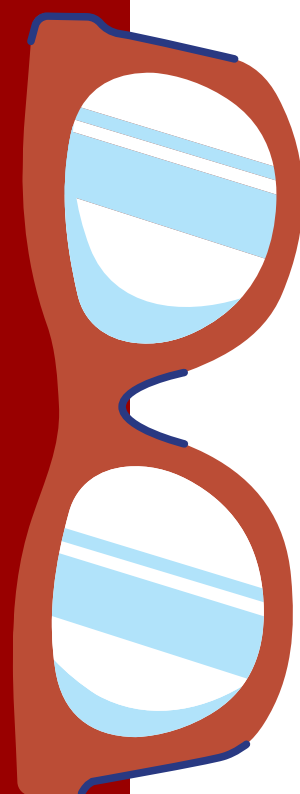


KEEP EM HYDRATED

Farm animals need to drink water throughout the day. Develop a fresh water routine or install misting systems.

KNOW THE SIGNS

- Over 105° Body Temperature
- Lethargy
- Rapid Breathing
- Stumbling
- Doesn't Want to Eat/Drink
- Excessive Sweating
- Dehydration



CALL FOR HELP

[Click Here](#) for a list of local veterinarians who care for farm animals in Indiana